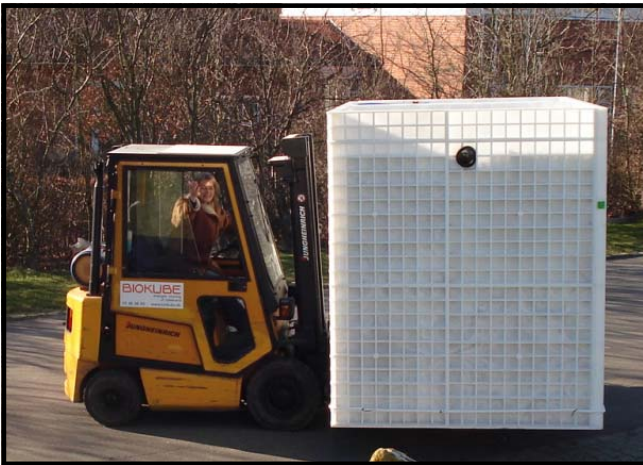


# Biokube Jupiter factsheet no. 1. marts 2008, hbl



**That is it:**

The Biokube Jupiter Element is AWTS system build into a square tank. All major components are build into the tank. The installation is then easy and fast. All element are in a size for also container delivery.

**1 to 3 in a row.**

The systems run from one to 3 in a row depending of level of cleaning level.

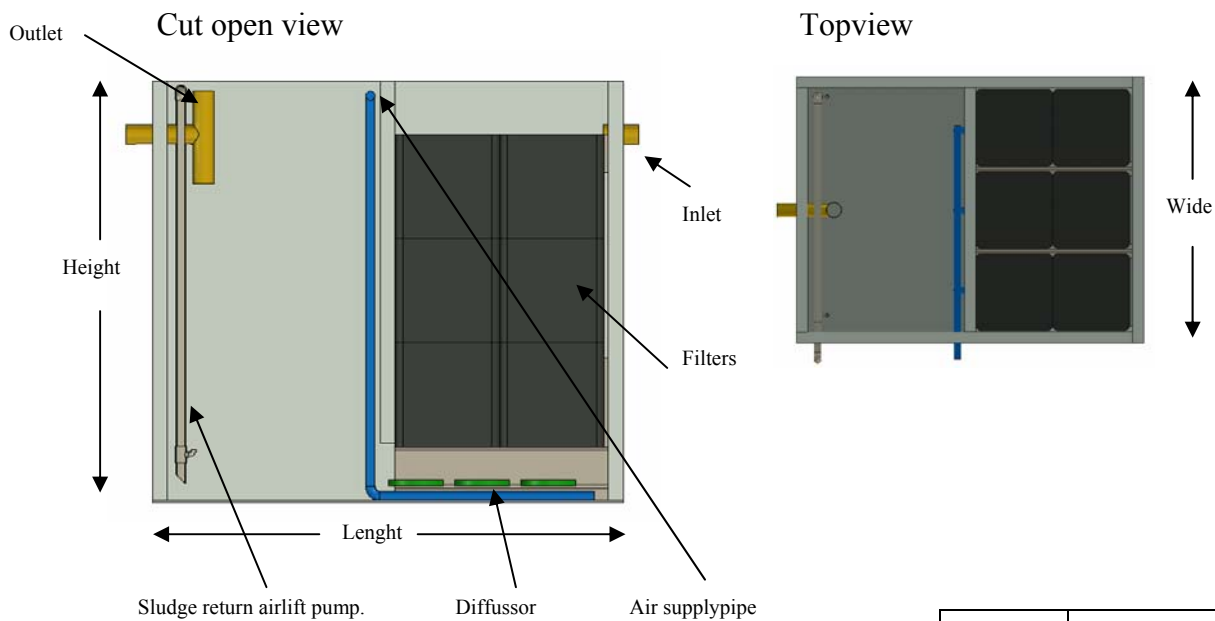
**All in plastic.**

The element is for wastewater cleaning and the materials is Poly-propylen and pvc. The materials stand the very hard physical conditions in wastewater.

**How does it work.**

The waste water is pumped into the top of the filter blocks. Here the pollution is treated. The biological treatment consists of a submerged biological filter block with a very large surface (type Exponet Bioblock 100 m<sup>2</sup>/m<sup>3</sup>)

Aeration comes from diffusers placed under the filter blocks. The filter blocks are separated from the clarification chamber by a wall. Outside the filter block the water stands still and the sludge can settle. From the bottom of the clarification chamber sludge is pumped back to the pre-settlement tank by air-lift pumps.



Component	Matarial.
Outer tank	Polypropylen UV-stabilized
Cover	Polypropylen UV-stabilized
Pipes	PVC
Diffusores	EPDM and polypropylen

Element capacity (1)	Height (mm)	Wide (mm)	Length (mm)	Weight (mm)	Airsupply connection (mm)	Inlet outlet
75 m <sup>3</sup>	2215	2280	3830	1350	50	110/110
50 m <sup>3</sup>	2215	1900	3210	900	50	110/110
30 m <sup>3</sup>	2215	1900	2480	750	50	110/110
25 m <sup>3</sup>	2215	1900	1900	600	40	110/110
15 m <sup>3</sup>	2215	1285	2280	450	40	110/110

(1) The capacity is based on household wastewater load BODmax: 500 mg/liter.